

- In addition to routine checks for each use, PPE should regularly undergo a detailed inspection by a competent person. Petzl recommends an inspection every 12 months and after any exceptional event in the life of the product.
 - PPE inspection should be conducted with the manufacturer's Instructions for Use.
- Download the instructions at [PETZL.COM](https://www.petzl.com).



ANCHOR STRAPS

1. Known product history

Any PPE showing unexpected degradation should be quarantined, pending a detailed inspection.

The user should:

- Provide precise information on the usage conditions.
- Report any exceptional event regarding his PPE.

(Examples: fall or fall arrest, use or storage at extreme temperatures, modification outside manufacturer's facilities...).

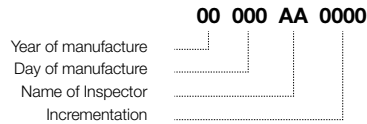


2. Preliminary observations

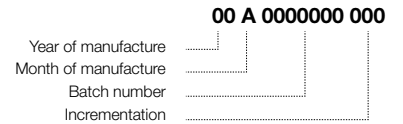
Verify the presence and legibility of the serial number and the CE mark.

Attention, the serial number code on our products is evolving. Two types of code will coexist. See below for details on each serial number code.

Code A:



Code B:

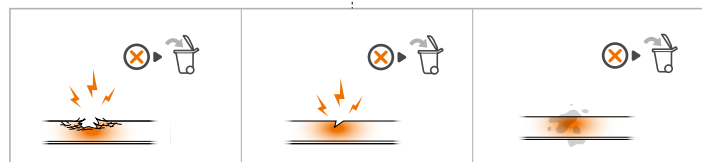
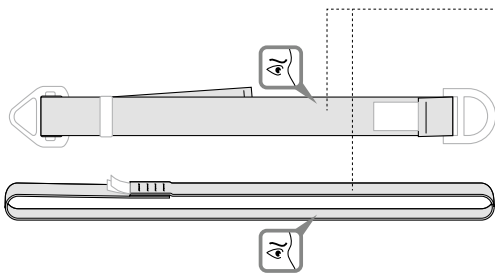


Verify that the product lifetime has not been exceeded.

Compare with a new product to verify there are no modifications or missing parts.

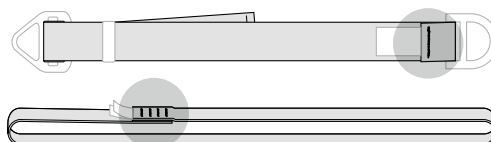
3. Checking the condition of the strap

- Check the condition of the strap along its entire length: look for cuts, wear and damage due to use, to heat, to chemicals... Be particularly careful to check for cut fibers.



etc...

- Check the condition of the safety stitching on both sides. Look for any threads that are loose, worn, or cut.

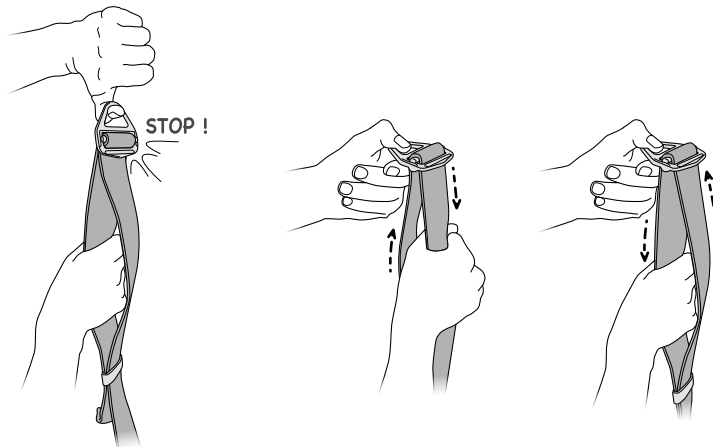


4. Checking the attachment points and adjustment buckle (depending on the model)

- Check the condition of the attachment points and of the adjustment buckle: marks, cracks, wear, deformation, corrosion...

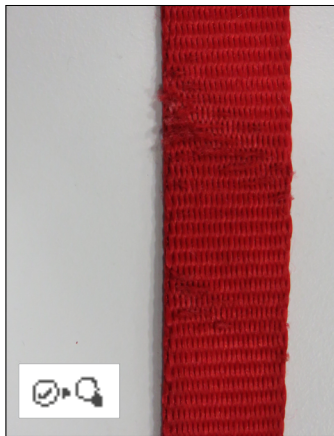


- Verify that the adjustment buckle operates properly.

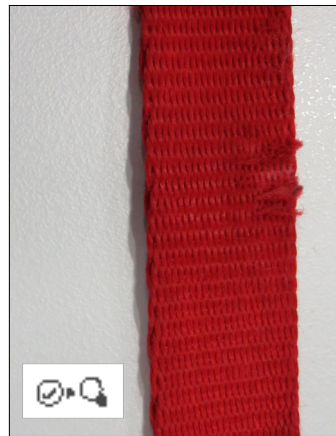


5. Appendix: examples of straps that are worn out, or that should be retired

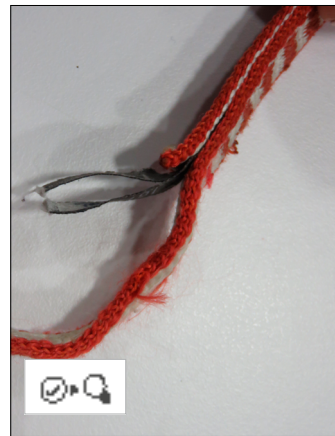
- Frayed webbing



- Frayed webbing



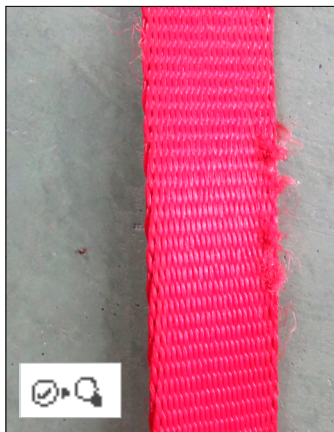
- Cut threads



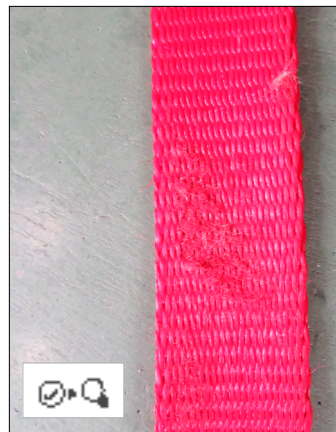
- Frayed webbing



- Frayed webbing



- Fuzzy area



- Fuzzy area

